

Product data sheet

Specifications

SQUARE D

Green Premium™



Meter mains, QO, CSED, ringed socket, 400A, surface mount, maximum 8 spaces, 16 circuits, Class 320 manual bypass

CU816D400CB

Product availability: Stock - Normally stocked in distribution facility

Price*: 4,151.00 USD

Main

Product or Component Type	Meter Mains
Range of Product	QO

Complementary

Line Rated Current	400 A
Short-circuit current	25 kA
Network number of phases	1
Meter socket type	Ringed
Mounting	Surface Semi flush with field installed flange kit
Number of spaces	8
Number of circuits	16
Number of Tandem Breakers	8
Hub type	A-L
Electrical connection	Studs, line side Feed-thru lugs, service ground
Wire Size	AWG 4...250 kcmil aluminium)service ground AWG 4...250 kcmil copper)service ground
Disconnect	Service disconnect (factory installed)
Main Breaker Rating	200 A
Branch Breaker Rating	200 A
Service feed location	UG
Bypass type	Manual bypass Class 320
Height	43.00 in (1092.20 mm)
Width	28.25 in (717.55 mm)
Depth	7.87 in (199.90 mm)
Bus Rating	200.0 A

Environment

Product certifications	UL E-6294
------------------------	-----------

Price is "List Price" and may be subject to a trade discount – check with your local distributor or retailer for actual price.

Ordering and shipping details

Category	US1DE3A00022
Discount Schedule	DE3A
GTIN	785901583608
Returnability	Yes
Country of origin	US

Packing Units

Unit Type of Package 1	PCE
Number of Units in Package 1	1
Package 1 Height	43.0 in (109.2 cm)
Package 1 Width	28.3 in (71.8 cm)
Package 1 Length	7.9 in (20.0 cm)
Package 1 Weight	1.120 lb(US) (0.508 kg)

Contractual warranty

Warranty	18 months
----------	-----------

Sustainability

Green Premium™ label is Schneider Electric's commitment to delivering products with best-in-class environmental performance. Green Premium promises compliance with the latest regulations, transparency on environmental impacts, as well as circular and low-CO₂ products.

Guide to assessing product sustainability is a white paper that clarifies global eco-label standards and how to interpret environmental declarations.

[Learn more about Green Premium >](#)

[Guide to assess a product's sustainability >](#)



Transparency RoHS/REACH

Well-being performance

 Mercury Free

 RoHS Exemption Information Yes

Certifications & Standards

Reach Regulation [REACH Declaration](#)

Eu RoHS Directive Compliant with Exemptions

China RoHS Regulation [China RoHS declaration](#)
Product out of China RoHS scope. Substance declaration for your information.

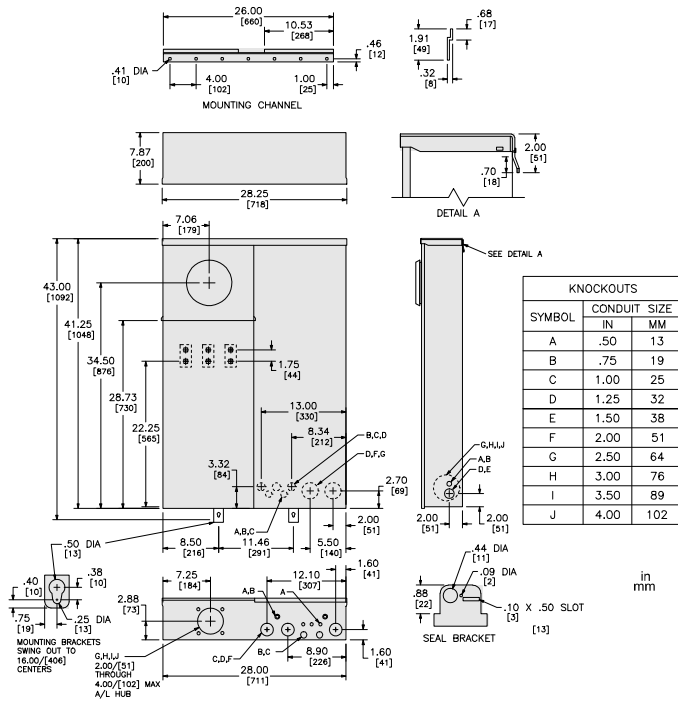
Environmental Disclosure [Product Environmental Profile](#)

Circularity Profile No need of specific recycling operations

California Proposition 65 "WARNING: This product can expose you to chemicals including: Lead and lead compounds, which is known to the State of California to cause cancer and birth defects or other reproductive harm. For more information go to www.P65Warnings.ca.gov"

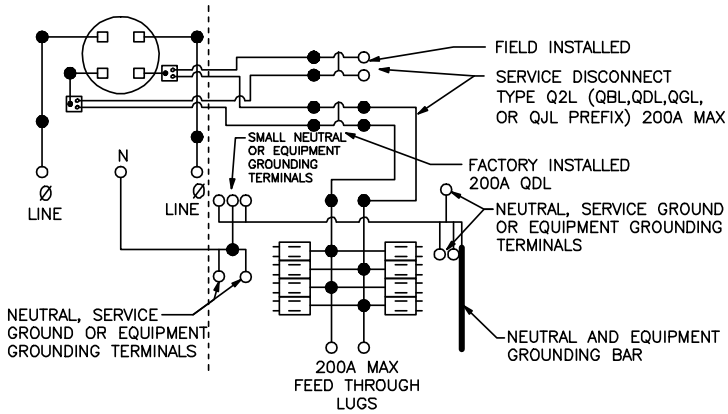
Technical Illustration

Dimensions



Technical Illustration

Wiring diagram



- □ TWO SINGLE POLE, ONE PLUG-ON SPACE TYPE QOT OR ONE SINGLE POLE TYPE QO. TWO POLE TYPE QO, QOA OR QOC(125A MAX.) MAY PLUG-ON TWO ADJACENT SPACES. TWO POLE TYPE QOC (150-200A MAX.) MAY PLUG-ON FOUR ADJACENT SPACES (RIGHT SIDE ONLY).